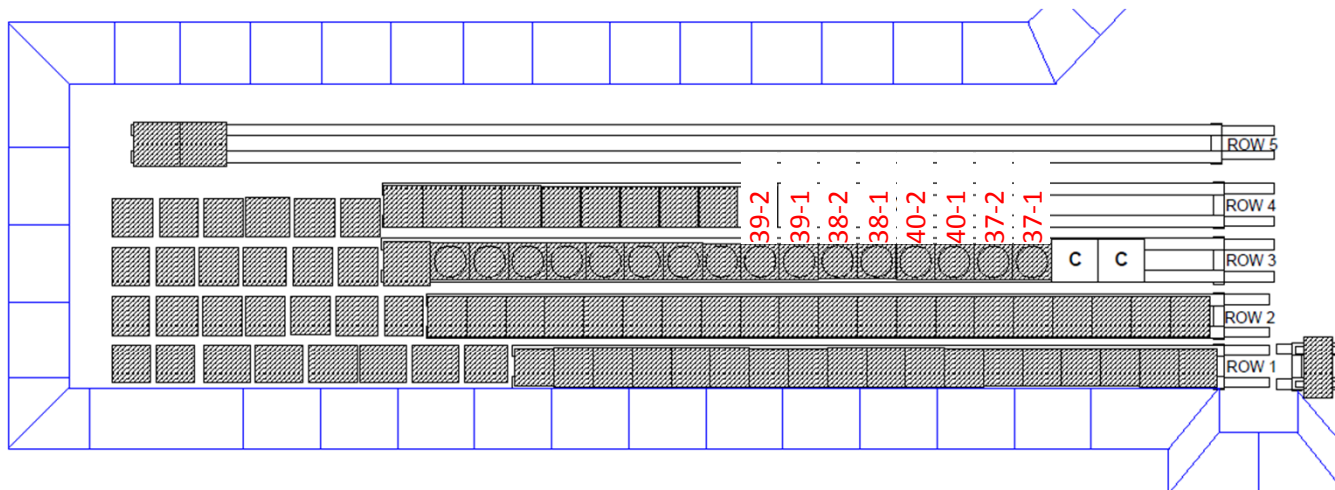


Lat/Long: 33' 56.20", -119° 31' 10.05"

Sources:

http://www.hanford.gov/files.cfm/Enterprise_EA_for_public.pdf

<https://www.neco.navy.mil/upload/N00406/N0040610R1163ATTACHMENT.pdf>



Attachment 2.1
1 of 1

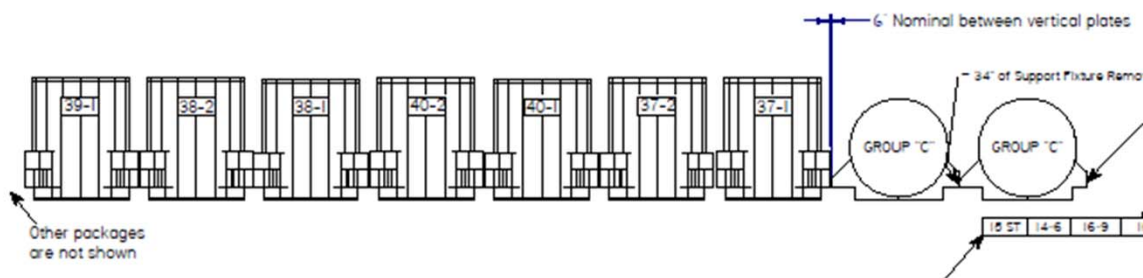
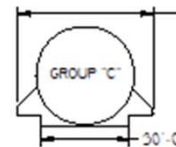
1 Group A → A
5 Group C → C

**EXISTING
PACKAGES** →



**ROW 3
STEEL RAIL LAYOUT
FOR SECOND PACKAGE PLACEMENT**
Looking North

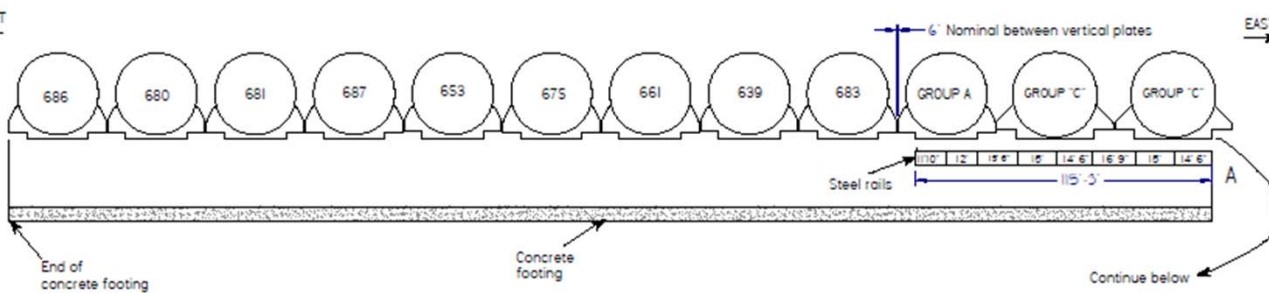
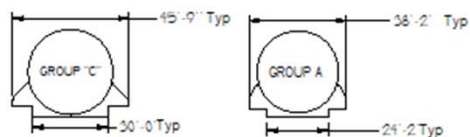
WEST ←



Other packages
are not shown

**ROW 4
STEEL RAIL LAYOUT**
Looking North

WEST ←



→ EAST